




North Rosedale News




Changing Seasons

SERVING THE COMMUNITY SINCE 1929

Stay Connected.

 @North Rosedale Community

 @northrosedaleresidents

Join us.
Your Membership helps support your community and our programs.

Please see inside or visit our website to renew your 2025 membership.



Falling into Winter

Fall has arrived and with the chill in the air, winter is on it's heels.

We have another great edition for you. We are delighted to be holding the annual Holiday skating party. So, please mark your calendars for Saturday, Dec 7th from 1 to 4pm. For more details watch for an NRRA eblast! Not getting our eblasts? Sign up today – see inside for membership details.

Wow! Thanks to those who again generously contributed to the Fall Second Harvest Thanksgiving Food Drive. Rosedale, Moore Park, Bennington Heights, Governor's Bridge and Summerhill areas all participated

and on page six we share how many meals we provided.

In this issue we continue to celebrate our 20th anniversary as a Heritage Conservation District. It was 20 years ago the NRRA looked around and realized how quickly the city was transforming - both for the good and arguably not so good. We noticed heritage homes and buildings were being demolished or the heritage attributes being destroyed. These changes had two side effects ... First, the charm of the past was being lost forever; and second, we realized what an amazing gem this area was and is - both richly steeped in heritage and irreplaceable once lost, in terms of its look, feel, spaciousness and timelessness. In this issue we tackle painted or coated heritage brick. We have had an unusually high number of our members contact us asking about painted brick. In this edition, we explore why painting or coating heritage brick is detrimental to the brick itself and why we are concerned about protecting our heritage properties. We also remind all how to and when to procure a heritage permit for you renovations or alterations to the front of your North Rosedale home.

Finally, you will find another update from board member Tom Connell on the progress/on-going fight to protect the wonderful green areas, parks and ravines that surround us.

Board member Sue Howe continues her column working with local tree experts John Oysten and Stephen Smith of Urban Forest Associates exploring all our parks and introduces us to another tree species. Stay tuned to continue to learn about all things trees!

Below, we remember past President and former Board member of the NRRA Bill Herridge. A great supporter of the North Rosedale community and the NRRA.

Here's to a wonderful and safe winter for all!

Kathy Falconi & Catherine Morton

Co-Presidents, North Rosedale Residents' Association

Herridge, William Richard Bennett APRIL 28, 1932 - AUGUST 1, 2024

NORTH ROSEDALE AND NRRA BOARD DIRECTOR EMERITUS



We are truly saddened at the loss of our indomitable Bill Herridge.

He served well over 30+ years as an NRRA past President, Board Director, and finally as Board Director Emeritus. Bill was always first to our board meetings, always highly informed on issues impacting our area and Toronto's ever changing political landscape. He was fiercely dedicated to North Rosedale and highly active in representing the NRRA at FoNTRA and CORRA meetings. Bill not only attended but hosted his last in-person NRRA board meeting at the age of 91 and then attended board meetings via zoom until his passing at age 92 years of age.

Bill was born in Ottawa. Bill's was very proud of his Uncle R.B. Bennett, Prime Minister of Canada, 1930-1935. He was educated at Harvard College and Harvard Law School. Active in Harvard alumni activities, Bill was a first Vice-President of the Harvard Law School Association. Called to the Bar of Ontario in 1958, and QC in 1971. Bill had practiced law in Toronto for forty-one years, at the time

of his retirement with Miller Thomson. Bill's practice included appearances before the Supreme Court of Canada, and many other courts and administrative tribunals.

No remembrance of Bill is complete without noting his dedication to Church, community and ballet. Bill was an elder of Rosedale Presbyterian Church and served as a member of the Committee on Church Doctrine, and as a member of the Trustee Board, of the Presbyterian Church in Canada. He was a dedicated supporter and patron of the arts and for many years served as a member of the Board of Directors for the National Ballet of Canada. He became a Vice-Chairman, and at the time of his death was a member of the National Ballet's Honorary Board. He was Chairman of the Sir William Campbell Foundation, and a long-time director and Vice-President of the Conservation Foundation of Greater Toronto.

He will be greatly missed by all of us.

est: 1954

SUMMERHILL

MARKET

Thank You For Your
Continuous Support North Rosedale!



*Summerhill's Own Lemon Honey Chicken
with Bacon and Parsnip Mash.*

6 beautiful market locations with over 500 delicious in-house prepared meals and bakery items to choose from. Order online for same day delivery. Visit summerhillmarket.com.



QUEEN'S PARK ROUNDUP - FALL 2024

It's a privilege to be your provincial elected representative, working to build a liveable and affordable city and province with good schools, great transit, and an exceptional public health care system. I'd like to share two issues I'm hearing from residents.

Auto-Theft And Community Safety

Thank you to the residents who organized the community safety meeting at Rosedale United Church in May. Many attendees spoke of feeling angry, betrayed, scared, and worried for their safety.

Everyone in Ontario should be safe. That's our goal.

Canada is experiencing its worst wave of auto-theft on record. In Ontario alone, auto theft claims costs increased by 52.4% between 2018 and 2023.

Solving the issue of auto-theft requires a coordinated approach from all levels of government, from a proactive city policing response to apprehending the shipment of stolen vehicles out of Canada's ports.

Here's what I'm pushing for Ontario to do.

The province should ensure all Service Ontario stores are verifying a vehicle's VIN number when vehicle ownership is transferred so stolen vehicles are resold in Ontario. Each vehicle has a 17-digit serial number, called a VIN, which is intended to help governments, police and insurers link a vehicle to its owner. Police estimate nearly one-third of stolen vehicles are being resold in Canada.

We are also calling for the province to address the staffing shortages and judges in the provincial court system to ensure timely and impartial justice. Court rooms are sitting empty and criminal cases are being thrown out because of excessive delays. To ensure justice, policing must be twinned with an effective and responsive court system.

We can solve homelessness

As rent and food prices skyrocket, Ontario is experiencing an increase in homelessness. Thousands of people are sleeping rough in ravines, in shelters, on friend's couches, and in encampments in towns and cities across our province.

The Conservative government doesn't even have a handle on how many people are homelessness, nor do they have a good plan to address this complex social problem. Ontario has built just 1067 affordable homes in six years.

It is more cost-effective to provide permanent housing to people so they can live good lives, work and raise families, than it is for them to stay homeless.

It's also doable. Other countries, such as Finland, have solved the homelessness crisis, and if they can do it, so can we.

To address homelessness, Ontario should increase social assistance rates so people can afford rent, bring in strong rent control to stop people from being priced out of their home, provide help for people struggling with addiction and mental health challenges, and move forward with an ambitious plan to build thousands of affordable homes on public land.

Please reach out to our office via 416 535 7206 or Jbell-co@ndp.on.ca if you have feedback, want to join our email list, or need help.

Jessica Bell

Jessica Bell
MPP for University Rosedale

COMMUNITY OFFICE
719 Bloor Street W, Unit 103
Toronto, ON M6G 1L5
416-535-7206 | JBell-co@ndp.on.ca

QUEEN'S PARK
Room 384, Main Legislative Building
Queen's Park, Toronto, ON M7A 1A5
416-325-1620 | JBell-qp@ndp.on.ca



FALL 2024

Two years have now passed since I was first elected to Toronto City Council, and I am tremendously proud of the improvements we have made together. I feel especially satisfied for having earned a reputation at City Hall for doing my homework, following up and causing "good trouble". My focus throughout my tenure has been on substantive interventions, listening carefully, and giving thanks and praise where it is due.

Budget season is upon us - thank you to everyone who participated in the preliminary consultation in October, whether online or in person. There will be another round of intensive consultations in January before the mayor brings her budget to Council on February 11th.

I am doing everything possible to accelerate our multifaceted Housing Action Plan, with its ambitious goal of 65,000 new affordable homes. Much of this depends on federal and provincial cooperation which is not yet forthcoming, but we are doing a lot with what we have.

It's time to make your 2025 vacant home tax declaration. The process is much simpler this year; watch for the instructions in the mail. Would your condo board, church or other group like us to come hold a clinic to make it easier for your members? Please let us know and we will be glad to come.

What else can we do together to make Toronto better?

Bike Lanes

Many of you have asked what you can do about Doug Ford's attack on our bike lanes. I urge everyone to contact their local MPP's office, join a group, and visit cycleto.ca and sign their petition.

Water Bills

The transmission unit that sends your meter readings to the city may have failed early due to battery problems. These units have saved the city more than \$300 million; now we will be spending a small part of those savings to replace the broken units or to function without them. Details on what to do have been mailed to every water customer. If you need help resolving an unexpectedly large water bill or with finding and reading your water meter, please let us know. You can call the special line at 311 for help; if that doesn't work, ask our office.

Noisy Garbage Trucks

Do you lose sleep because of night-time private waste collection, which the previous Council exempted from the noise bylaw? If so, please contact 311. Working with No More Noise Toronto, I have successfully compelled Municipal Licencing and Standards to start resolving these complaints, but nothing will happen unless you let them know. If the problem persists, please report it again.

Vaccines

It's time to get your Covid and flu shots, to reduce the risk of serious illness. Get them from your family doctor or pharmacy.

Do you need a volunteer for tree planting, Christmas giveaways, or other public services? Does your school, church or other group hold an event where my team and I can meet your members? Please invite us! Thank you so much for including us!

Diane Saxe

City Councillor for University Rosedale



Thank You for Your Generosity and Your Kindness

It was inspiring to see our community come together in May and raise over 14,000 pounds of food for Second Harvest during Mayfair. So, our thoughtful organizer, Cam Ross, decided to reach out for help launching a second food drive as we approached Thanksgiving.

Using an engaging community-based model of designated "street captains" we achieved almost complete coverage to organize a grassroots food collection for our neighbourhoods of Rosedale, Moore Park, Bennington Heights, Governor's Bridge and Summerhill. We even extended coverage into Leaside and Chaplin Estates. Over two days in October, the street captains and thoughtful neighbors reached out to, and dropped off carloads of food to the Second Harvest trucks located at Rosedale Park and Loblaws on Moore.

Together we raised 10,000 pounds of food, which translates to 20,000 nutritious meals. The quality of the food was once again impressive and thoughtful. It was wonderful to see the community and kids get involved in such a meaningful way.

Your kindness and generosity have gone a long way with the communities that Second Harvest serves.

The impact is real.

The team at Second Harvest extends their sincere gratitude for your efforts and for your kind energy.

We plan to do this again in May. If you want to learn more about the street captain program and how you can participate in this initiative reach out to us at infor1@northroosedale.ca

Make sure you are signed up for our eBlasts so you can keep informed of these important community-based efforts. The more people we can reach out to, the greater impact we can have as a community.



Update on Yellow Creek

By Tom Connell
NRRA Parks and Ravines Committee

The Toronto and Region Conservation Authority (TRCA) is making progress on the Yellow Creek channel repair project, in the Vale of Avoca ravine running northwest from the intersection of Mt Pleasant Road and Roxborough Drive. The focus of this project is to stabilize a section of the Yellow Creek channel that has been the location of serious stream bank and ravine slope erosion, particularly due to episodes of elevated stream flow arising from extreme weather. Work commenced in August and the project is now expected to run through March 2025 (subject to change). We understand the scope of the project has been extended to address an adjacent area that experienced additional erosion as a result of a severe storm in September, although for the most part this project does not address the condition of trails in the area.

Currently the trail is fully closed in the area of work, preventing pedestrian movement between the north and south sections of the ravine.



Work Underway on Yellow Creek (Oct. 2024)

The Current Yellow Creek Project May Not Address Adjacent Trail Erosion

However, it is still possible to cross the ravine, both downstream and upstream from the project. That said, pedestrians should abide by the trail closure signs in light of the condition of the area, and the equipment and materials on site. Particular caution should be taken on the ravine slopes in cold and/or snowy conditions, given the poor state of many of the open pathways. The TRCA is planning a community planting event in 2025 following completion of the channel work. In addition, the TRCA is also on-track to begin the channel/slope stabilization and stairway reconstruction farther north in the ravine (below Heath Crescent) starting in 2025.

The local residents' associations comprising the Midtown Ravines Group view this project as an important step towards remediating a set of interconnected problems within the Vale of Avoca. However, due to the current lack of a master plan for this ravine, we are very concerned that other work on adjacent areas in dire need of remediation will necessitate future closures and disruption for staging and construction, and a less efficient use of funds. We will continue to press the city to develop an over-arching plan for needed work in the Vale of Avoca. Although this ravine was included as a top-ten priority investment area among the 86 environmentally significant areas (ESAs) designated by the City of Toronto, to our knowledge there has been no ESA management plan issued for this area under the City's Ravine Strategy since it was adopted in October 2017.

For more information, including project updates:

<https://trca.ca/conservation/erosion-risk-management/restore/yellow-creek/>

HEAPS ESTRIN
REAL ESTATE TEAM

AGENTS OF CHANGE
FOR US, REAL ESTATE IS PERSONAL

HEAPSESTRIN.COM
416.424.4910 | @HEAPSESTRIN

Scan to View Our Newest & Off-Market Listings

Royal LePage Real Estate Services Heaps Estrin Team. Brokerage Independently Owned and Operated.



CELEBRATING 20 YEARS

North Rosedale's Heritage Bricks

The majority of North and South Rosedale homes are a century old, and built with handmade kiln dried, or brick-pressed quarry dried from the local Brickworks, now known as Evergreen Brickworks. Our bricks are considered historic for their colour, texture, and quality. While heritage bricks were used here in Rosedale, they were also used to build our Ontario Legislature, Osgoode Hall, Casa Loma and Massey Hall. Take a look next time you walk or drive by these heritage structures.

WHAT IS THE BRICKWORKS? EVERGREEN BRICKWORKS



The "Brickworks" or the Don Valley Brick Works was created in 1889 by the Taylor brothers. John Taylor and his brothers, William, and George, purchased the site in the Don Valley in the 1830s where they established a paper mill, but while digging post holes for fencing, William came across a large quantity of clay. He took a sample to a local brick works where it was confirmed this clay would in fact make a high quality brick. Both a quarry and the Don Valley Pressed Brick Company soon after were established. The Don Valley Pressed Brick Company specializing in the production of bricks using three techniques. The first technique was called the soft-mud process. Clay quarried from the site was mixed with water from nearby Mud Creek, placed in moulds, dried and then baked in kilns. A second technique was called dry-press bricks using quarried shale. The shale was placed into moulds and machine pressed. The third process was called stiff-mud. It used a mixture of clay and shale but required less water than the soft-mud process. A column of clay was forced through a dye which was then cut to form using a wire. Regardless of the brick process the finished brick products were shipped by cart out of the valley along Pottery Road or by rail on a spur built into the yard. While the majority of produced bricks were used locally here in Toronto, Don Valley Pressed bricks can be found across the continent. The quality of the Don Valley brick was recognized as prize winners at both the famous 1893 Chicago World's Fair and the Toronto Industrial Fair in 1894.

Source Wikipedia

WHY CAN'T I PAINT MY HOUSE?

As we continue to celebrate 20 years as a Heritage District we think it is important to address the fact that we've recently received A LOT of questions surrounding heritage bricks and paint. We have been asked whether bricks can be painted or coated? We also have been asked whether long-ago painted brick homes can be safely restored to the original underlying brick.

Applying paint, coatings or stucco to bricks, stone or mortar that has

historically been unpainted or uncoated is inconsistent with good heritage conservation practice, and is therefore, generally prohibited in our area and in all Ontario Heritage Conservation Districts. The reason for the prohibition is because the aesthetic characteristics of the masonry, such as its colour variations and texture, contribute to the unique heritage character of the home and the streetscape and therefore the Heritage of the area.

On the flip side, restoration of previously painted brick to its original state is encouraged, but only if it can be done safely and in accordance with good heritage restoration practices. If you have questions about the removal or application of coatings on your brick, stone or mortar, we recommend you contact City of Toronto, Heritage Planning. Currently the City of Toronto Heritage Planning department is working with both North and South Rosedale homeowners to restore masonry that was mistakenly coated, and they are very knowledgeable in this area.

Quite apart from the negative heritage impact, applying paint or other coatings to brick and masonry clogs or eliminates the brick's natural porous surface. This prevents the brick from being able to breathe and release moisture. As the coating traps the moisture, the bricks can develop mold, rot, and begin to structurally break down. Seasonality or our environmental cycle of freeze-thaw further degrades the bricks as the trapped moisture freezes inside the brick. Not only does the brick erode behind the coating, so does the mortar between the bricks – eventually compromising the structural integrity of the home. While this is not instantaneous, it does serve to devalue a property and adds to costly maintenance. Should you have a coated brick home it does require regular maintenance. There is risk involved in the usage of power-washing, sandblasting, and/or stripping chemicals to remove flaking or peeling paint, which can further damage the integrity of heritage bricks, or any brick.

For more information on why not to paint brick, visit:
<https://www.brickmakeover.co.uk/blog-detail/why-you-shouldnt-paint-bricks-14>

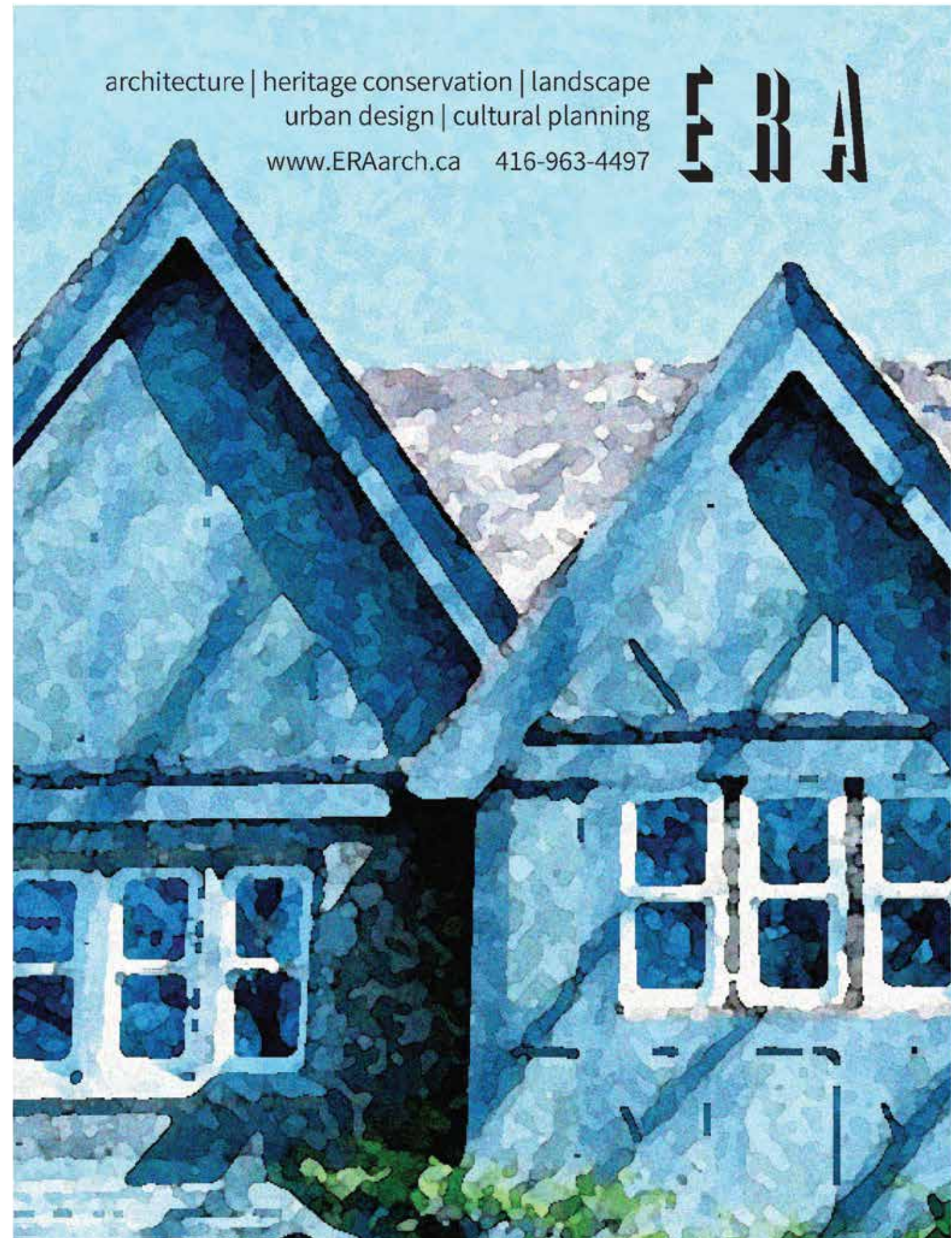
A Heritage Permit along with a Build Permit is required before any alterations are made to street scape of your property. It is important to acquire a Heritage Permit and a Build Permit before you begin any work ... Use the links below to get started:

HERITAGE PERMIT

heritageplanning@toronto.ca or contact Amir Nissan, Toronto Heritage Planning Manager for North Rosedale at Amir.Nissan@toronto.ca

BUILD PERMIT

<https://www.toronto.ca/services-payments/building-construction/apply-for-a-building-permit/building-permit-application-guides/>



architecture | heritage conservation | landscape
urban design | cultural planning
www.ERAarch.ca 416-963-4497





Roundabout Safety

We've heard from so many of our neighbours that driving and walking around our two Roundabouts feels dangerous. We have one at the end of Governors Bridge and the other at the intersection of Roxborough and Highland. Cars often go too fast, and drivers seem confused about who has the right of way - especially when pedestrians are trying to cross. Many are unsure whether they should wait for pedestrians or proceed, leading to tense and potentially hazardous situations.



Intersection of Roxborough and Highland

We all agree that even one accident is too many. The safety of everyone—whether walking, crossing the street, biking or driving—is our top concern. To ensure that every day remains safe and enjoyable for all of us, the following rules “according to the Ontario Driver’s Handbook” should be followed around Roundabouts: <https://www.ontario.ca/document/official-mto-drivers-handbook/safe-and-responsible-driving>

- 1 Slow Down**
Roundabouts are designed for slower speeds. Drivers must reduce speed when approaching and circulating to ensure they can react to other vehicles and pedestrians. You always travel counter-clockwise.
- 2 Yield to Pedestrians**
Pedestrians have the right of way at crosswalks and at roundabout entrances and exits. Drivers must stop and allow them to cross safely.
- 3 Yield to Vehicles in the Roundabout**
Drivers entering the roundabout must yield to traffic already inside. This avoids confusion and helps maintain the flow of traffic.
- 4 Use Turn Signals**
Clear communication is key. Drivers should always signal when they're about to exit the roundabout, so others know their intentions.
- 5 Do Not Overtake**
In roundabouts, drivers should never pass other vehicles. This is especially important around large vehicles like trucks and buses that need extra space.

By following these guidelines, we can all contribute to a safer, more efficient environment for both drivers and pedestrians. Let's work together to keep our streets safe for everyone.



North Rosedale Annual Winter Holiday Skating Party
Saturday, Dec 7th from 1pm to 4pm
Rosedale Park



The Rosedale Centre is a community gathering place in the heart of Toronto's Rosedale neighbourhood. We offer music, arts, and wellness programs. We rent performance spaces and multi-purpose rooms and we host weddings. The Rosedale Centre is a secular venue located within Rosedale United Church at 159 Roxborough Drive. All are welcome!



LIVE MUSIC

In October 2024, The Rosedale Centre and Hugh's Room Live presented an encore performance Gordon Lightfoot Tribute to a packed house.

On December 14, 2024, The Rosedale Centre and Hugh's Room Live will present world-renowned Canadian pianist **Angela Hewitt**. It will be an incredible, intimate performance as she presents works by Wolfgang Amadeus Mozart, Johann Sebastian Bach and George Frideric Handel. Her interpretations of the music of J.S. Bach has established her as one of the composer's foremost interpreters of our time. Doors

open at 6:30 pm. Concert at 7:30 pm. Cash bar and merchandise for sale. Tickets are available at www.showpass.com/angela-hewitt-at-roosedale-centre.

MUSIC, ART, AND WELLNESS PROGRAMS

The Rosedale Centre is running a **MI RE DO Music Class** for children aged 4- 8 on Mondays from 4:30-5:30 pm. This is a great class for young beginner musicians to have fun and learn about music through games and singing with Dr. Sarah Svendsen, a registered member of the Ontario Music Teaching Association. If you're interested contact us at register@roosedalecentre.org.

From Monday to Saturday, **The Artful Child** offers a space that is rich with opportunities to explore a variety of artistic mediums, materials, costumes, instruments, books and music. They also run drop-in and after-school programs and host birthday parties. For more information go to www.theartfulchild.ca/roosedale.

Harmony School of Dance and Music is running several ballet and tap classes on Thursday evenings for children from pre-kindergarten to age 8. This is a great opportunity for children to dance, sing, and express themselves. For more information go to www.harmonyschoolofdance.ca.

Yeow Taekwondo offers a variety of classes for children, teens and adults between 4:30-6:30 pm, Monday-Wednesday. Classes are taught by Master Jason who holds a 7th degree black belt and is known for his high-quality teachings. Reach out to jason_yeow@yahoo.com for more information.

The Center is offering an innovative **Mobility and Movement Class for Seniors** (55+) on Wednesdays from 11:30am-12:30pm. This fall prevention program combines improvised live music with simple and fun movement activities to help older adults improve balance, mobility and memory. For more information, email us at register@roosedalecentre.org.

The Rosedale Centre runs a **Tai Chi Class** on Wednesdays from 2:00-3:00 pm. Tai Chi is known as a moving meditation, a sophisticated martial art system, and a powerful mind/body health system built on the principles of Traditional Chinese Medicine. The low impact nature of Tai Chi makes it suitable for people of all ages and fitness levels. If you are interested in taking the class, please email us at register@roosedalecentre.org.

The Rosedale Centre offers throughout the year **Courage and Renewal Retreats** (both online and in-person) designed to help you navigate personal and professional transitions. The retreats create space where you can gather with others to be nourished and sustained, so you may live your life with courage and conviction. If you would like to be notified about upcoming retreats, drop us a line at info@roosedalecentre.org.

ART GALLERY



Our featured artist for November and December is **Jesse Clark**. Jesse's work is inspired by his creative family. His mother, an interior designer, would lay out swatches of fabric and paint across their living room floor. When Jesse

was a young man, he went to work with his mother. Learning the ins and outs of interior design, Jesse honed his creative spark. Jesse worked hard and played even harder. The play eventually took over his life. Jesse is a recovering addict. His mom passed away in 2022; a heartfelt loss launching a battle with anxiety and depression. Encouraged by his therapist, the love from his children, his beautiful wife and her children, Jesse was able to step back into the world of art. Art is his therapy, his freedom. It is a form of truest expression. This show is called **DRAGON**. Symbols of not only power but rebirth, these pieces exhibit an artistic revival. The Rosedale Centre Art Gallery is open to the public Monday – Friday from 10:00am – 4:00pm using the doors off Glen Avenue. If you are an artist or know someone who might be interested in showing in our Gallery, please contact us at info@roosedalecentre.org

PARTNERSHIPS & RENTALS

Are you looking for space to offer a program to the residents of Rosedale or host a special event? If yes, we'd love to connect. Contact Laurie Lyle, Executive Director of The Rosedale Centre at laurie.lyle@roosedalecentre.org.

FOLLOW US

facebook.com/roosedalecentre/
instagram.com/therosedalecentre/

FEATURED PROPERTIES OF ELISE KALLES



173 DUNVEGAN ROAD

Captivating Forest Hill home. Soaring ceilings, mahogany & limestone floors. French doors opening to Juliette balconies and covered terraces. Lower level entertainment room, gym & spa. Walk out to pool, fountain, gazebos & gardens shaded by mature trees.

LISTED AT \$13,800,000



77 COLDSTREAM AVENUE

Rare opportunity in Lytton Park. Perfect family home sited on approximately 1-acre adjacent to ravine. 4+2 beds, 7 baths. Primary suite w/ fireplace, w/o to balcony, his & hers dressing rooms. Indoor pool, spa. Sports court.

LISTED AT \$9,600,000



481 RUSSELL HILL ROAD

Forest Hill Georgian style home. Heated oak hardwood floors, 3 marble gas fireplaces. 4 + 1 beds, each with ensuite. Main level library with adjoining den. Family room walkout to spacious desk. Lower level exercise studio & entertainment room with wet bar.

LISTED AT \$9,595,000



8 BINSARTH ROAD

Classic North Rosedale family home. Over 6,300 sf including lower level, 7 beds, 6 baths. Hardwood floors throughout, leaded glass pane windows, plaster crown mouldings & Fr. Doors. Kitchen breakfast & family room combined. Lush gardens & pool.

LISTED AT \$8,800,000



13 OLD FOREST HILL ROAD

Classic Forest Hill Tudor style home. 6 beds, 5 baths. Old World charm showcased by hardwood floors, leaded glass pane windows, bow windows & crown moulding. Lower level family room with adjoining kitchen and walk-out to enchanting gardens.

LISTED AT \$7,680,000



1 ST THOMAS STREET, #14B

Distinguished address in heart of Yorkville. 2,868 + 135 (terrace) sf. 2 beds, 4 baths, family room, office, 2-car parking, locker. Southwest corner terrace offers panoramic views. 24/7 concierge, valet, guest suites, parking, car wash, pool, spa, catering kitchen.

LISTED AT \$5,500,000



PROVEN PERFORMANCE
MAKES THE DIFFERENCE!

If you have any thoughts of selling your home now, or in the near future, I would appreciate the opportunity to meet with you in the strictest of confidence to provide you with a market evaluation of your home.

416.441.2888 X291 | elisekalles@harveykalles.com | elisekalles.com

2145 AVENUE ROAD, TORONTO, ON M5M 4B2 | 416.441.2888 | HARVEYKALLES.COM



A name you can trust since 1957



All information and statements contained herein, provided by Harvey Kalles Real Estate Ltd., Brokerage regarding property for sale, rental or financing is from sources deemed reliable and assumed correct, but no warranty or representation is made as to the accuracy thereof and same is submitted subject to errors, omissions, changes in price, rental or other conditions, prior sale or withdrawal without notice. Not intended to solicit buyers or sellers under contract.

Neighbourhood Cleaners

How lucky are we in North Rosedale?

We have not one but two amazing dry cleaners all within walking distance.

And to top it off - you couldn't ask for nicer owners!

Please, North Rosedale let us introduce you to the wonderful people who provide us with such exceptional care.



418 Summerhill Avenue

7am-7pm Monday-Friday

8am-6pm Saturday

Owners: Rose and Mike Sanghera

Talk about a life time of dedication! Rose was 16 years old when she first worked at Ashbury's part-time after school. She was initially at Ashbury's second location, but they liked her so much they transferred her down to the Rosedale location. And a good thing they did! That is where she met her future husband Mike who was a shirt presser at the time. The two of them have been warmly greeting customers for over 45 years! In 2006, as the saying goes... they liked the product so much they bought the business! There are seven workers at Ashbury's; a shirt presser, a dry cleaning presser, a tailor, Mike, Rose, and their two younger children; Tammy who works in the morning and Michael who works the afternoon shift. Their eldest daughter Sonya enjoys her role as a stay-at-home mom to their new grandchild, Maya.

For 6 days of the week, Rose and Mike wake up at 3:45 am, leave their home in Mississauga by 4:30am and arrive at Ashbury's early enough to start up the machines so that they are ready to roll for their first customer at 7am. The two of them never take holidays together so there is always someone to man the ship.

Rose clearly has a strong connection with all of her customers; they feel like family to her. She has seen them all grow up over the years; the kids that used to come into the store with her parents now come in with their own children. Ashbury's is her second home.

And as an aside- if you're expecting- Rose claims she is pretty good at predicting the sex of your baby!

If you happen to be dropping off shirts on July 9th - it's Rose's birthday!

Rosedale 1 Hour Cleaners

404 Summerhill Avenue

7am-7pm Monday-Friday

8am-6pm Saturday

Owners: Jong tea Chin and his wife Hyun jung Kim

In 2004, Jong tea and his wife Hyun jung immigrated to Canada from Seoul Korea with their two young children, aiming to provide them with better educational opportunities. Chin who had left his career as an engineer at Samsung, initially worked as a Samsung appliance repairman in Toronto while Hyun jung was a stay at home mom.

In 2014, when the previous owner of Rosedale Cleaners, Mo Lalji, decided to sell the business and move to Ottawa, a family friend who owned a Lawrence Park dry cleaners convinced Jong tea to get into the business. When he purchased Rosedale Cleaners, he leveraged his expertise with machinery and proudly replaced the outdated cleaning machines with eco-friendly alternatives. His wife, Hyun jung joined the business as their kids have all grown up. She is the one that always greets you with such a warm, sweet smile. Jong tea and Hyun jung leave their home in Richmond Hill at 5:30am so they can open up shop for 7am. They pull back into their driveway each night at 8:30pm only to do the same thing over again, six days a week.

Luckily they manage to find time to go on a vacation together once a year.





2025 Membership Renewal

It's the annual North Rosedale Residents' Association membership renewal time. If you have never been a member, we hope you will consider signing up so we can continue to distribute this newsletter widely. It's easy to do - our annual membership fee is \$50 per year or \$140 for 3 years. We accept Interac E-transfer to: payments@northrosedale.ca or you can mail a cheque made out to THE NORTH ROSEDALE RESIDENTS ASSOCIATION. Place your cheque in the mail attention: Kathy Falconi, NRRA Secretary/Treasurer, 60 Douglas Drive, Toronto, Ontario, M4W 2B3. For more details just go to our website at www.northrosedale.ca

Why is the North Rosedale Residents' Association important and why should you support it?

The NRRA has been in existence for over 70 years, we are a volunteer board, not for profit organization that represents our neighbourhood and community interests with all levels of government. We are your voice, your representative. We are responsible for several community initiatives, like:

- The NRRA spearheaded the fight against Metrolinx Don Valley Layover along with surrounding residents' associations, FONTRA and Don't Mess with the Don.
- We are responsible for the organization and delivery of the local Candidate Debates for Municipal, Provincial and Federal Elections – date and details to be confirmed soon for the upcoming Provincial Debate!
- We hope you have attended or are aware we organize and host several annual in person events to foster greater community engagement – the Spring Park Clean Up Day, the Holiday Family Skating Event at Rosedale Park, and the CP Holiday Train Viewing Party.
- Just a reminder – Mark the date to come out and volunteer for the 2024 Annual Park Clean Up Day – Saturday, April 18, 2025.
- We partner with groups like the Toronto Field Naturalists and the Mid-town Ravines Group to lend our support to protecting our surrounding local parks and ravines.
- We produce and distribute this newsletter semi-annually both as an email and in hard copy – filled with all kinds of neighbourhood information, recipes, updates on city activities that impact our area!
- And, we develop surveys to gather feedback on how we can better serve our neighborhood and membership.

So we hope you will consider re-joining or joining for the first time ... Or, if not, we hope you will let us know why at info1@northrosedale.ca. Thank you!

And while we have your attention, and once you have re-joined or join the NRRA...

We have a few open spaces on the NRRA Volunteer Board!

Annually we add new volunteer board members to team. This year we will have a few seats available specifically on the Communications committee and on the Heritage and Development committees available as of June 2025.

If these areas interest you and you'd like to help the North Rosedale community we would be delighted to talk about becoming a member of the North Rosedale Resident's Association volunteer board! The NRRA board has been in existence for over 70 years. As volunteers, we work to ensure our neighbourhood is a safe and beautiful place to live. We tackle projects that enhance and protect our parks, ravines and green spaces. We monitor heritage in our unique and historic area. We work regularly with City Hall and our Councillor's office. We have partnerships with our local police at 53 Division and with surrounding local resident's associations with similar community issues or projects. We nurture the community spirit of our "Village within the City" through organized events like the federal and provincial electoral candidates debates, community clean up days, skating parties, holiday events and are always learning how best to keep our membership updated on our social media platforms. If this sounds interesting to you and you're a North Rosedale resident and you're able to provide a few hours a month as a volunteer, then we'd like to hear from you. Please contact us at info1@northrosedale.ca

BOARD OF DIRECTORS JUNE 2024 - JUNE 2024

Kathy Falconi Co-President
Membership/Safety/Communications

Catherine Mortin Co-President
Membership/Communications/Governance

Alison Marsh Secretary
Membership/Safety & Traffic

BOARD MEMBERS

Tom Connell
Safety & Traffic/Parks & Ravines

Sara D'Elia
Membership/Parks & Ravines

Sue Howe
Heritage & Development/Membership

Hosen Marjaee
Safety & Traffic/Parks & Ravines

Jane Shapiro
Heritage & Development

James Sloan
Community Engagement/Parks & Ravines

Jennifer Stewart
Community Engagement/Safety & Traffic

CONTRIBUTING PAST BOARD MEMBERS

Thom Antonio
Newsletter/Creative Director

Joan Law
Newsletter-Ad Engagement, Editing Skills

Norm Mierins
NRRA Lead contact for FoNTRA

Alexandra Jenkins
Heritage & Development & Newsletter

You are welcome to contact any member of the NRRA by emailing us at info1@northrosedale.ca Your email will be directed to the appropriate person to respond.

The NRRA would like to recognize and extend our gratitude and thanks to Thom Antonio for his unwavering commitment & talent as the creative force & direction of the NRRA Newsletters. Joan Law for all her on-going dedication to the NRRA Newsletter Ad Revenue & Article editing! And, Norm Mierins as the Lead for NRRA with FoNTRA.



@North Rosedale Community

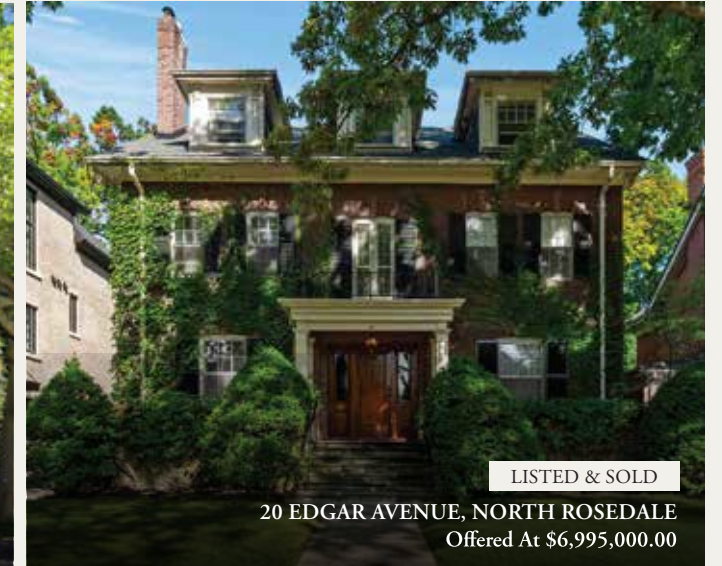


@northrosedaleresidents

A Brand Like No Other IT MATTERS WHO YOU WORK WITH



NEW LISTING
1 HAWTHORN AVENUE, SOUTH ROSEDALE
Offered At \$6,600,000.00



LISTED & SOLD
20 EDGAR AVENUE, NORTH ROSEDALE
Offered At \$6,995,000.00

The #1 Brokerage in Rosedale, Moore Park & Summerhill

For properties bought & sold from 2018 to 2022 with a total of over \$1.5 billion in sales volume†

James Warren is a constant for over 44 years in Rosedale, Moore Park, and Summerhill real estate. Please call us for a consultation on your real estate needs.



JAMES STRATHY WARREN* & ALEX OBRADOVICH**
SALES REPRESENTATIVES

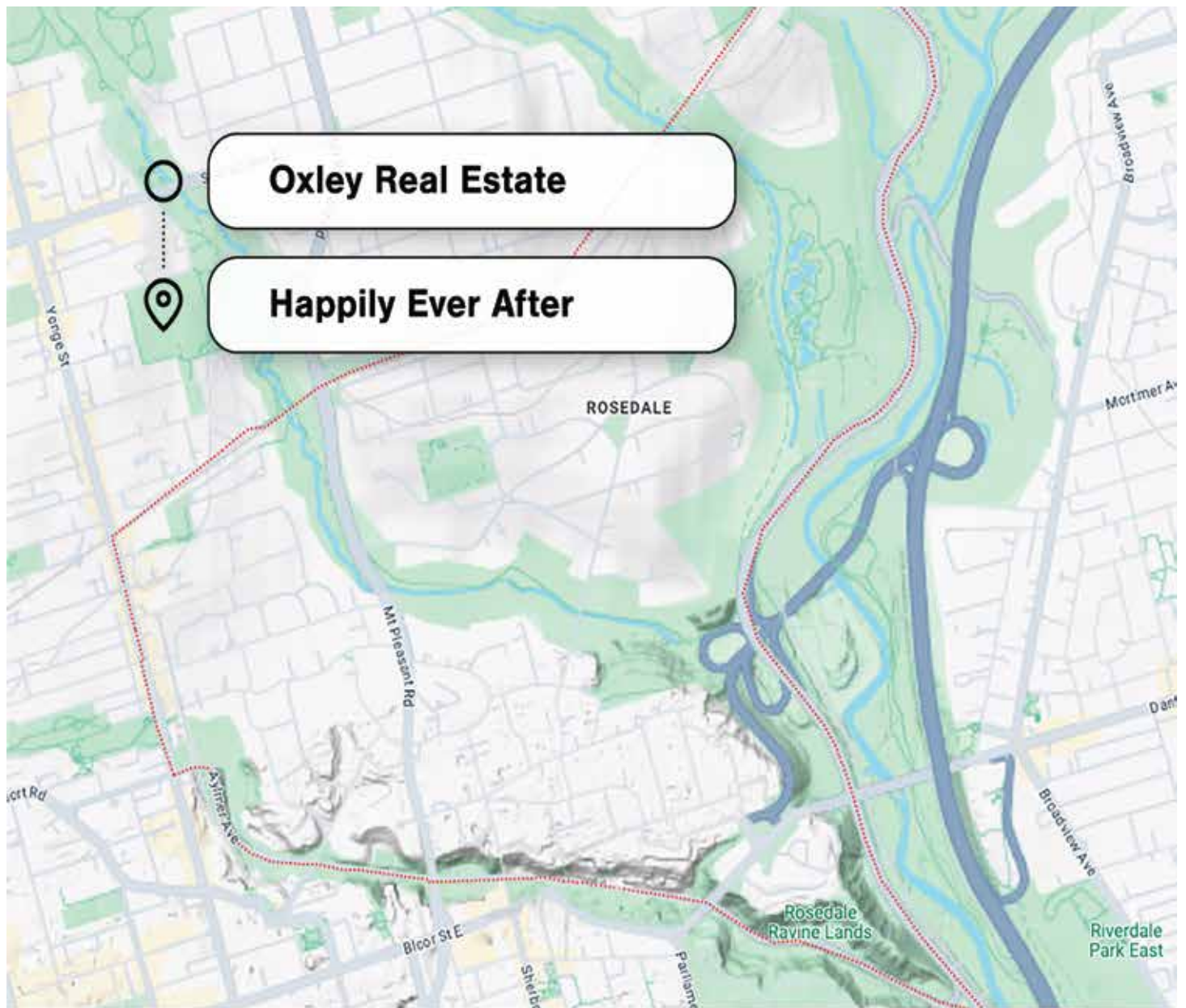
*Chairman's Award Winner 2021 | **President's Award 2021
James@jameswarren.ca | 416.520.5704 | Alex@chestnutpark.com | 416.803.4140

Chestnut Park® Real Estate Limited, Brokerage | chestnutpark.com
1300 Yonge Street, Suite 100, Toronto, ON M4T 1X3 | O: 416.925.9191

This is not intended to solicit buyers or sellers currently under contract with a brokerage.
†Source: Realty, IMS Incorporated, 2023.



FOLLOW US



We know the directions to your dream home.

No one knows Rosedale like we do.
If you want to know more, we'd love to chat.



Royal LePage Real Estate Services Oxley Real Estate, Brokerage

416.888.7007
www.oxleyrealestate.com